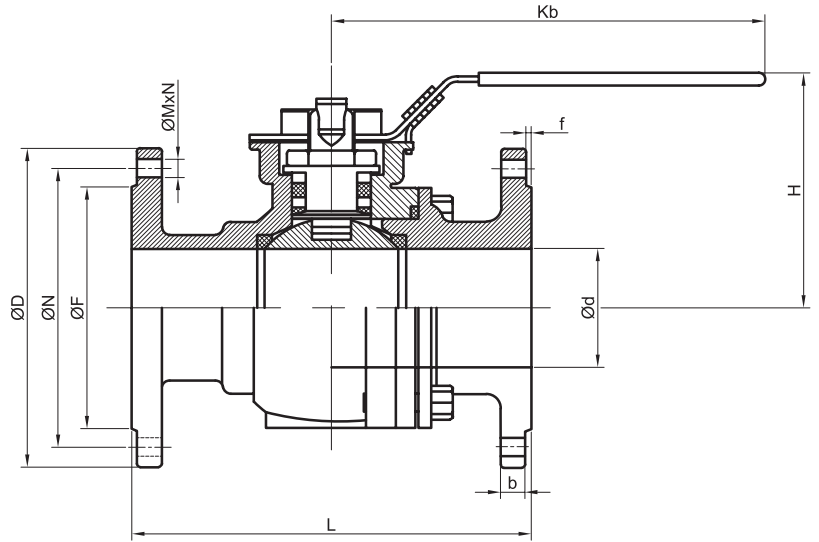
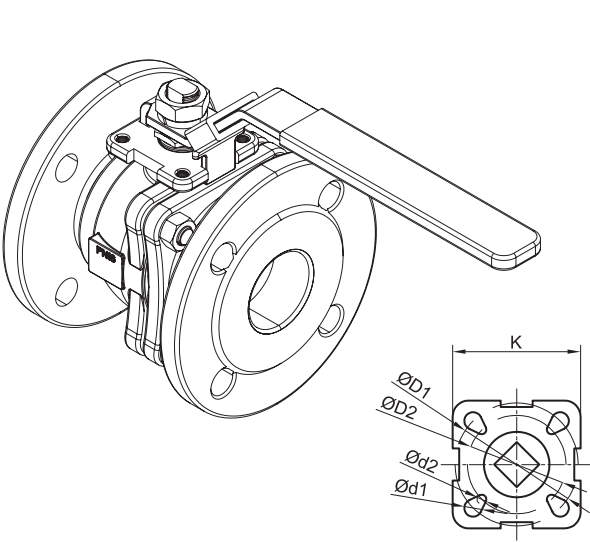


## Küresel Vana (2 Parçalı, Paslanmaz, Flanşlı, Tepe Flanşlı)

Ball Valve (2 PCS Body, St. Steel, Flanged, W/Mounting Pad)



### Uygulama Alanları / Applications

Su, Buhar, Basıncılı Hava, LPG-LNG, Petrol, Seramik Çamuru  
Water, Steam, Compressed Air, LPG-LNG, Oil, Ceramic Mud

### Teknik Özellikler / Technical Property

Bağlantılar / Ends: DIN 2533

BOYUTLAR / DIMENSIONS: EN 558-1

Face to Face: DIN 3204 F4

Çalışma Sıcaklığı / Working Temp.: -30°C / +180°C

Çalışma Basıncı / Working Pressure: PN16

ISO 5211 Tepe Flanşlı / With ISO 5211 Mounting Pad

NO	PARÇA ADI	PART NAME	MATERIAL
1	GÖVDE	BODY	CF8/CF8M
2	KÜRE	BALL	SS304/SS316
3	CİVATA	BOLT	S.STEEL
4	KOL KİLİDİ	LOCK	S.STEEL
5	MİL	STEM	SS316
6	KAPAK	CAP	CF8/CF8M
7	SİT	SEAT	PTFE
8	MİL CONTASI	STEM GACKET	PTFE
9	KOL KİLİDİ	LEVER	37

SIZE	L	Kb	H	Ød	ØD	ØN	ØF	b	f	ØMxn	ØD1	ØD2	Ød1	Ød2	K	PRESSURE CLASS
1/2"	115	140	93	15	95	65	45	14	2	14x4	42	36	5	5	36	PN16 PN40
3/4"	120	140	95	20	105	75	58	16	2	14x4	42	36	5	5	36	
1"	125	175	115	25	115	85	68	16	2	14x4	50	42	6.5	6.5	42	
1 1/4"	130	180	120	32	140	100	78	16	2	18x4	50	42	6.5	6.5	42	
1 1/2"	140	200	140	40	150	110	88	16	3	18x4	70	50	8.5	6.5	50	
2"	150	200	145	50	165	125	102	18	3	18x4	70	50	8.5	6.5	50	
2 1/2"	170	225	160	65	185	145	122	18	3	18x4	102	70	10.5	8.5	70	PN16
3"	180	265	175	80	200	160	138	20	3	18x8	102	70	10.5	8.5	70	
4"	190	265	190	100	220	180	158	20	3	18x8	102	70	10.5	8.5	102	